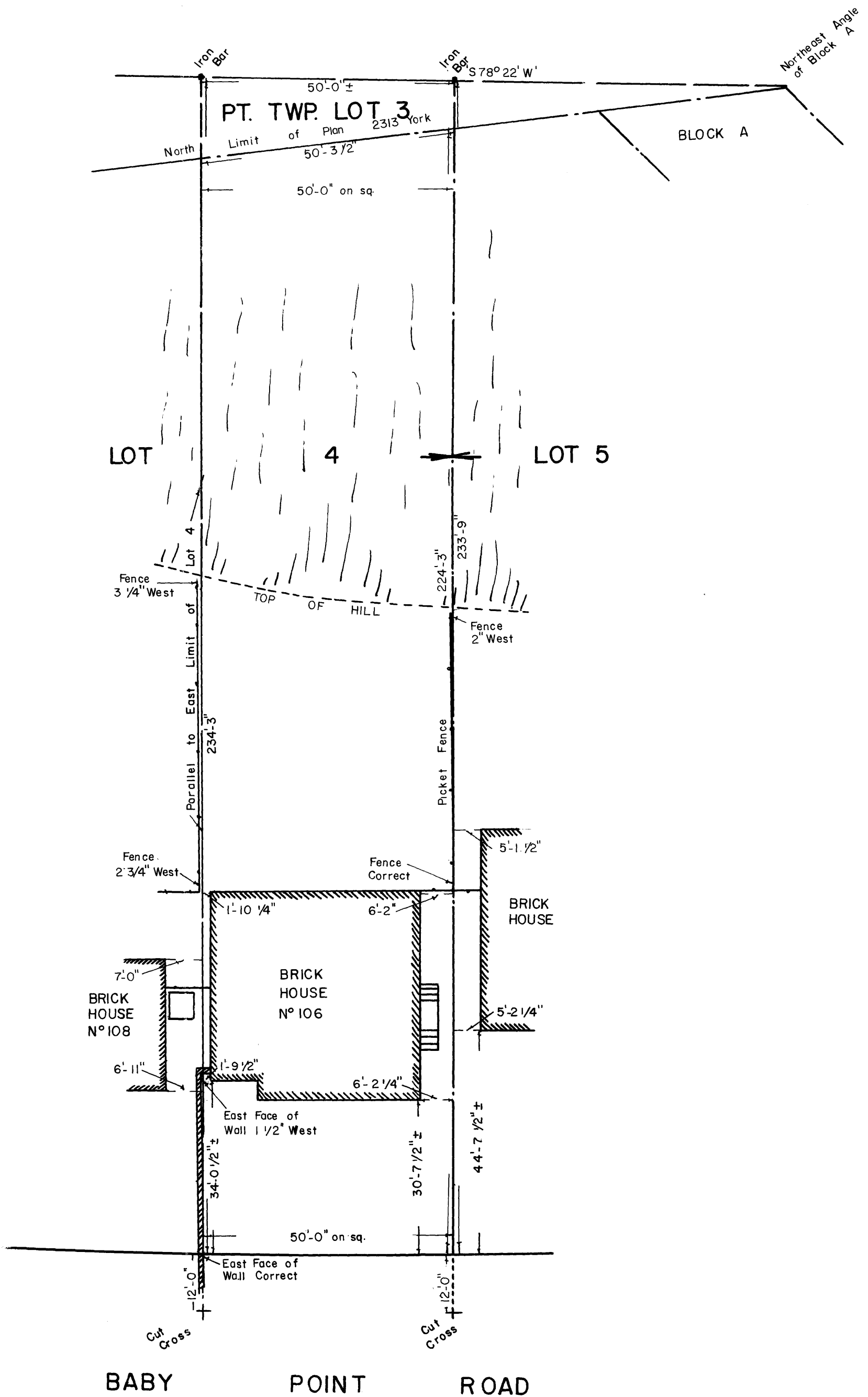


PLAN OF SURVEY OF
PART OF LOT 4, PLAN 2313 YORK &
PART OF TOWNSHIP LOT 3 (HUMBER RANGE)
CONCESSION 2 FROM BAY, YORK
BOROUGH OF YORK

SCALE 1" = 20'

UNWIN, MURPHY & ESTEN
O.L.SURVEYORS JAN. 24. 1967
330 BAY STREET, TORONTO

PER. *John Hunt O.L.S.*



UNWIN, MURPHY & ESTEN
O.L.SURVEYORS
330 BAY STREET, TORONTO